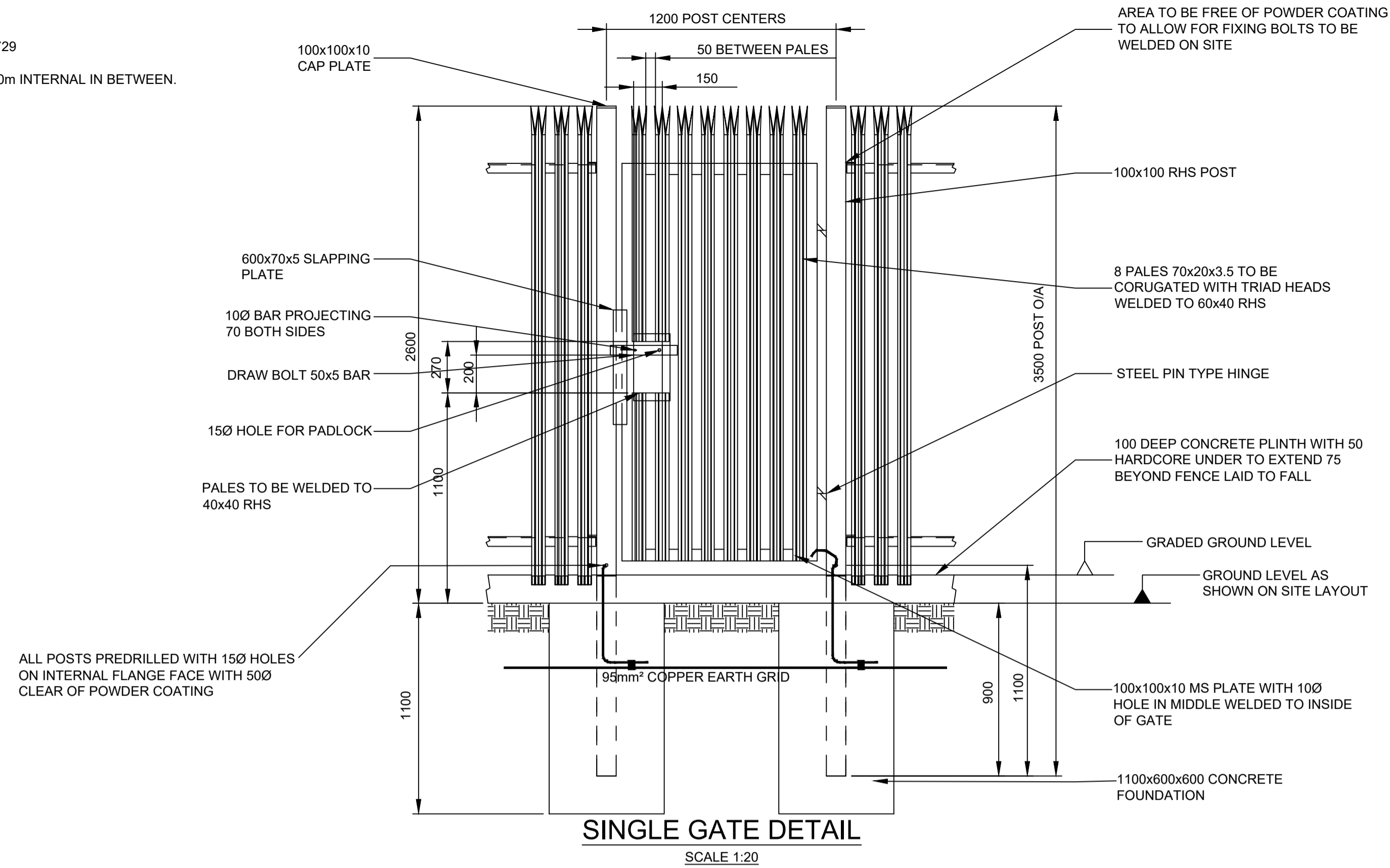


- NOTES:**
- THE FENCE WILL BE BLACK POWDER COATED
 - THE FENCE IS TO BE CONSTRUCTED IN ACCORDANCE WITH BS1722 PART 12 1990
 - ALL ELEMENTS OF THE FENCE AND GATE ARE TO BE HOT DIPPED GALVANISED TO BS729
 - ALL GATES TO OPEN INWARDS
 - PALISADE FENCE TO BE EARTHED AT EVERY CORNER POST AND POST OF AT LEAST 10m INTERNAL IN BETWEEN.



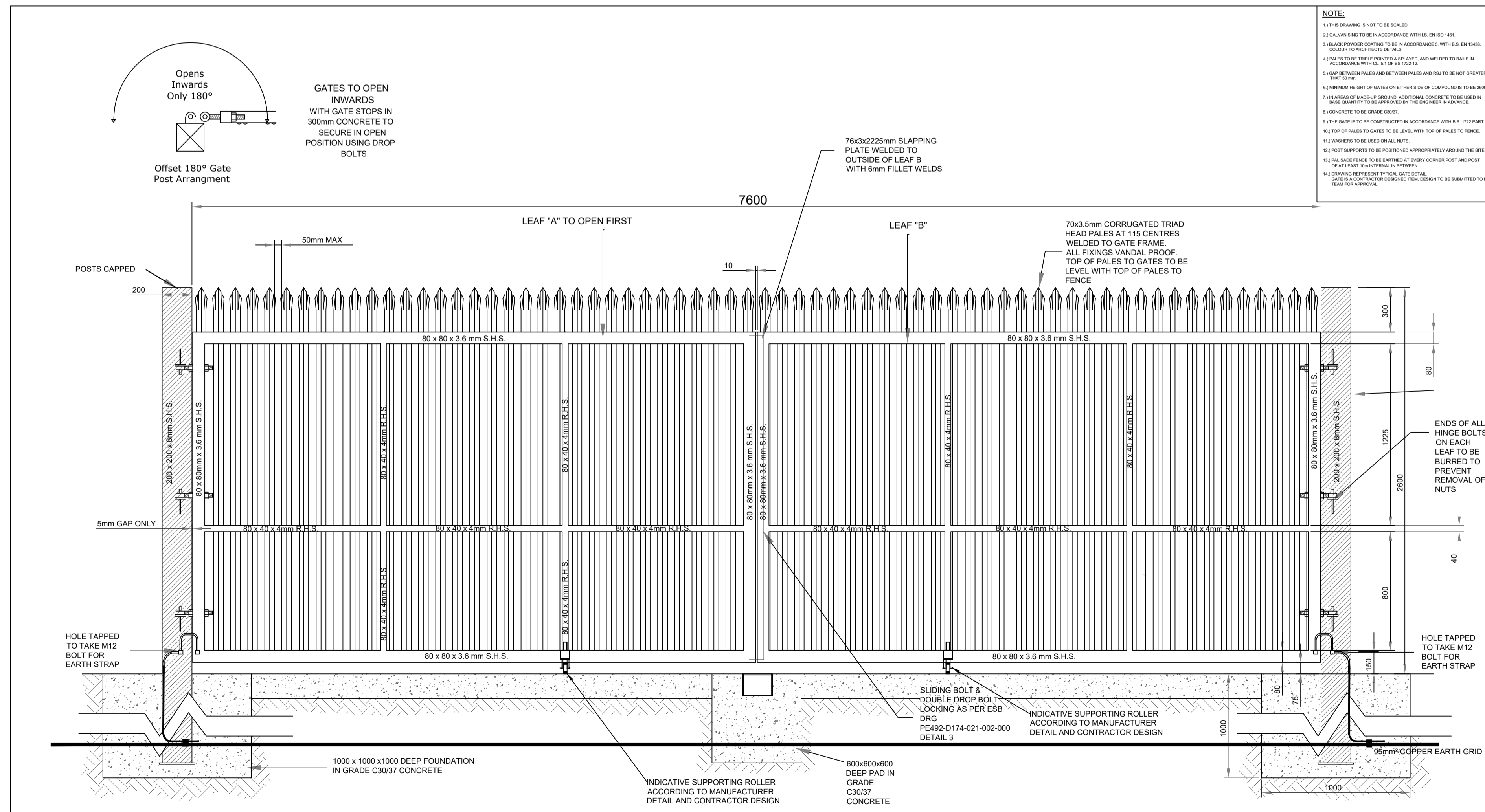
DRAWING IS PRODUCED USING THE IRISH TRANSVERSE MERCATOR (ITM) GEOGRAPHIC COORDINATE SYSTEM

A1

NOTE:

- 1.) THIS DRAWING IS NOT TO BE SCALED.
- 2.) GALVANISING TO BE IN ACCORDANCE WITH I.S. EN ISO 1461.
- 3.) BLACK POWDER COATING TO BE IN ACCORDANCE 5. WITH B.S. EN 13438. COLOUR TO ARCHITECTS DETAILS.
- 4.) PALES TO BE TRIPLE POINTED & SPLAYED, AND WELDED TO RAILS IN ACCORDANCE WITH CL. 5.1 OF BS 1722-12.
- 5.) GAP BETWEEN PALES AND BETWEEN PALES AND RSL TO BE NOT GREATER THAN 50mm.
- 6.) MINIMUM HEIGHT OF GATES ON EITHER SIDE OF COMPOUND IS TO BE 2600mm.
- 7.) IN AREAS OF MADE-UP GROUND, ADDITIONAL CONCRETE TO BE USED IN BASE QUANTITY TO BE APPROVED BY THE ENGINEER IN ADVANCE.
- 8.) CONCRETE TO BE GRADE C30/37.
- 9.) THE GATE IS TO BE CONSTRUCTED IN ACCORDANCE WITH B.S. 1722 PART 12.
- 10.) TOP OF PALES TO GATES TO BE LEVEL WITH TOP OF PALES TO FENCE.
- 11.) WASHERS TO BE USED ON ALL NUTS.
- 12.) POST SUPPORTS TO BE POSITIONED APPROPRIATELY AROUND THE SITE.
- 13.) PALISADE FENCE TO BE EARTHED AT EVERY CORNER POST AND POST OF AT LEAST 10m INTERNAL IN BETWEEN.

REFER TO DRAWING CAP-CSE-00-XX-DR-C-2106 FOR FENCING LAYOUT



- NOTE:**
- 1.) THIS DRAWING IS NOT TO BE SCALED.
 - 2.) GALVANISING TO BE IN ACCORDANCE WITH I.S. EN ISO 1461.
 - 3.) BLACK POWDER COATING TO BE IN ACCORDANCE WITH B.S. EN 13438. COLOUR TO ARCHITECTS DETAILS.
 - 4.) PALES TO BE TRIPLE POINTED & SPLAYED, AND WELDED TO RAILS IN ACCORDANCE WITH CL. 5.1 OF BS 1722-12.
 - 5.) GAP BETWEEN PALES AND BETWEEN PALES AND RSL TO BE NOT GREATER THAN 50mm.
 - 6.) MINIMUM HEIGHT OF GATES ON EITHER SIDE OF COMPOUND IS TO BE 2600mm.
 - 7.) IN AREAS OF MADE-UP GROUND, ADDITIONAL CONCRETE TO BE USED IN BASE QUANTITY TO BE APPROVED BY THE ENGINEER IN ADVANCE.
 - 8.) CONCRETE TO BE GRADE C30/37.
 - 9.) THE GATE IS TO BE CONSTRUCTED IN ACCORDANCE WITH B.S. 1722 PART 12.
 - 10.) TOP OF PALES TO GATES TO BE LEVEL WITH TOP OF PALES TO FENCE.
 - 11.) WASHERS TO BE USED ON ALL NUTS.
 - 12.) POST SUPPORTS TO BE POSITIONED APPROPRIATELY AROUND THE SITE.
 - 13.) PALISADE FENCE TO BE EARTHED AT EVERY CORNER POST AND POST OF AT LEAST 10m INTERNAL IN BETWEEN.
 - 14.) FINISHING REQUIREMENTS: FINAL GATE DETAIL GATE IS A CONTRACTOR DESIGNED ITEM. DESIGN TO BE SUBMITTED TO DESIGN TEAM FOR APPROVAL.

Rev	Description	Drawn	Checked	Date
P03	SID ISSUE	DM	PM	03.11.2020
P02	EIRGRID REVIEW	DM	PM	13.10.2020
P01	FOR DISCUSSION	DM	PM	28.08.2020

Clifton Scannell Emerson Associates
Consulting Engineers,
Safefit Lodge,
Castledawson Avenue,
Blackrock, Co. Dublin,
Ireland, A94 P768
T: +353 1 288 5006
F: +353 1 283 3466
E: info@csea.ie
W: www.csea.ie

CAP DEVELOPMENTS LLC
Client
OLDBRIDGE 110KV SUBSTATION
Project
PROPOSED GATE DETAILS SHEET 2
Dwg. Title
Drawn By **DM** Date **OCTOBER 2020**
Checked By **PM** Scale **1:30 @ A1** **20_057**
CSEA Job No.
Project Code Originator Zone/Phase Level Type Role Dwg. No.
DUB062HV - CSE - 00 - XX - DR - C - 2155
S2 SUITABLE FOR INFORMATION
Status Code Suitability Description
P03 PLANNING
Revision Project Status